

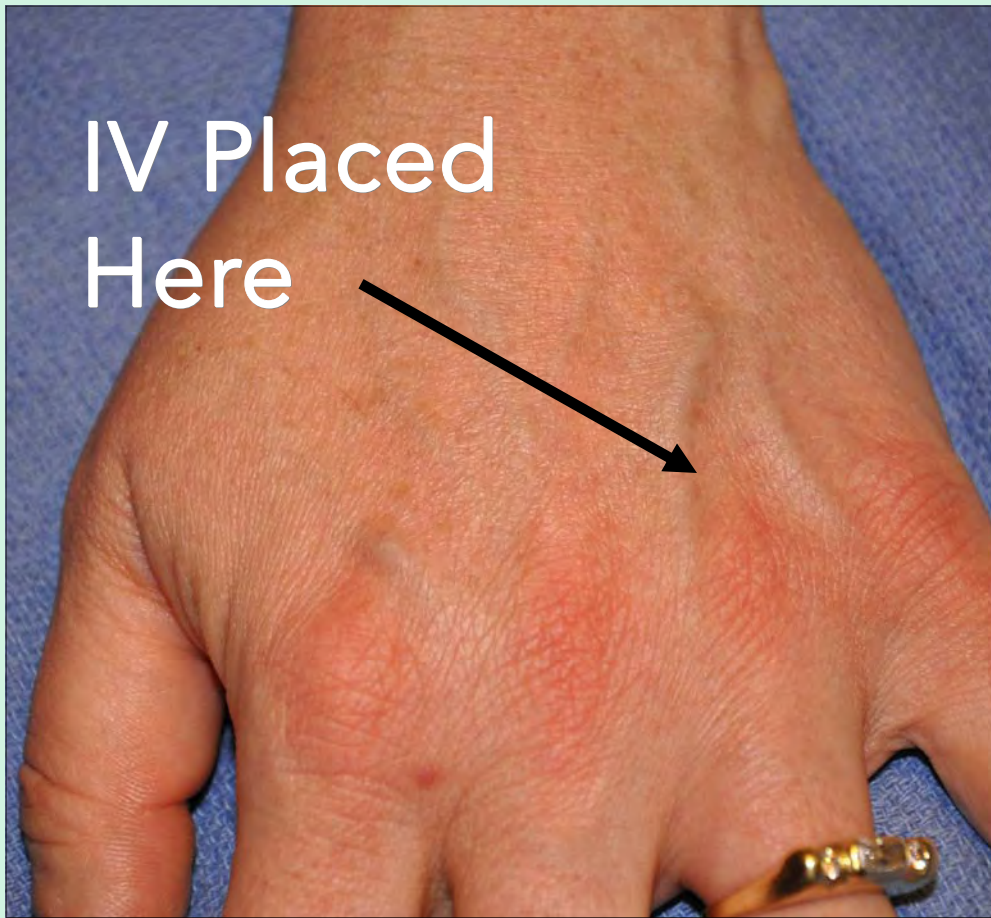
VeinViewer® Vision

Pre-Access Assessment

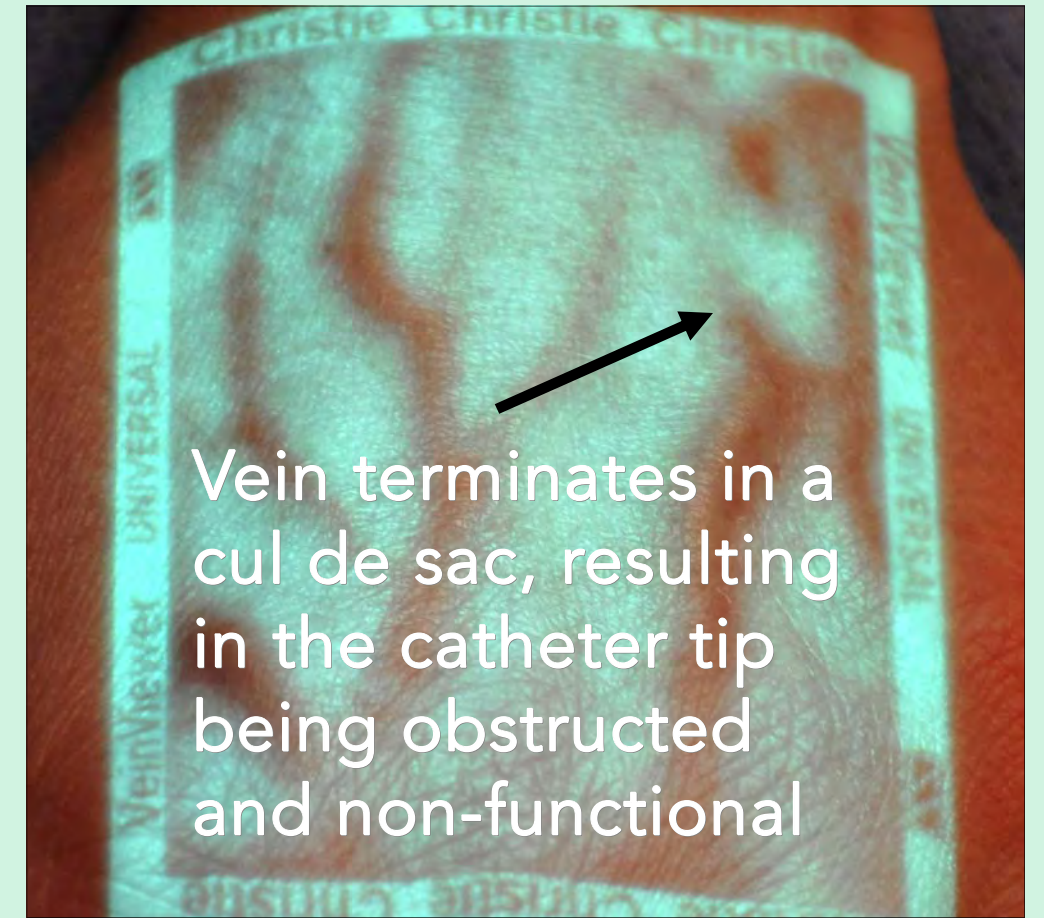
Case History

Healthy 47 yr old needs IV for Orthopedic procedure. IV placed in large vein but does not function. VeinViewer used to assess why. May have been able to prevent this problem.

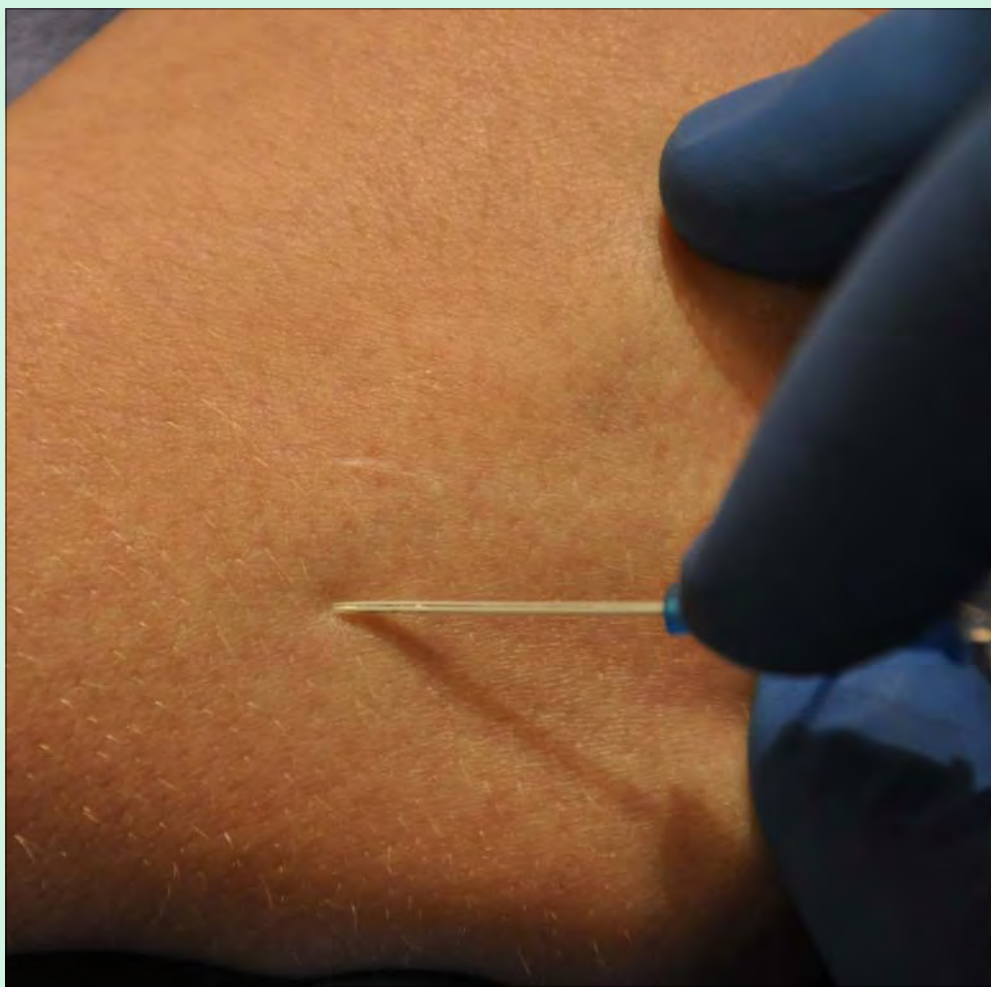
Assessment



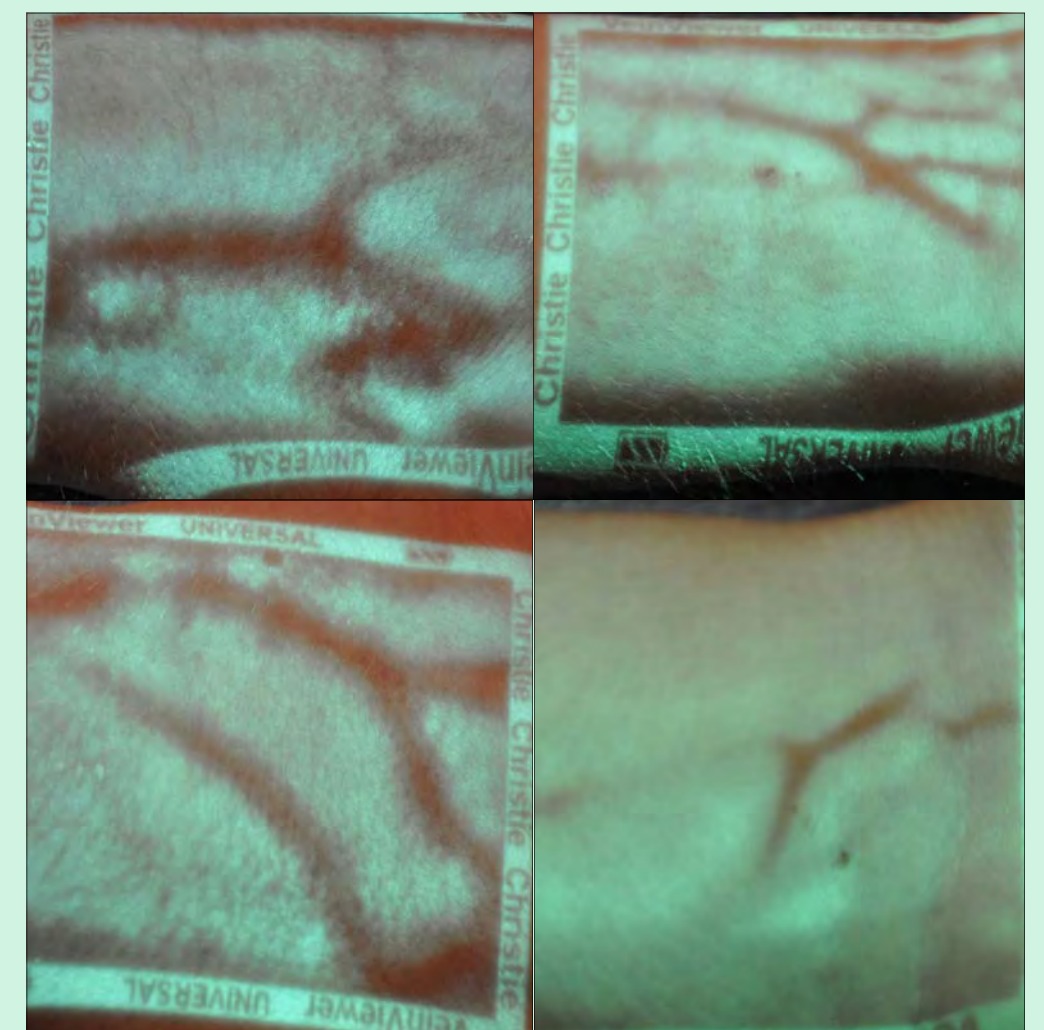
Vision



During IV access the vein that was visualized is lost during catheter insertion. VeinViewer allow visualization during the entire access procedure.



Before performing venous access the healthcare provider assesses which venous access site will be best for this patient. The hands, forearms, and wrists are all assessed. Right hand appears best.



VeinViewer VeinViewer VeinViewer UNIVERSAL VeinViewer VeinViewer VeinViewer

VeinViewer VeinViewer VeinViewer UNIVERSAL VeinViewer VeinViewer VeinViewer