

VeinViewer[®] Vision

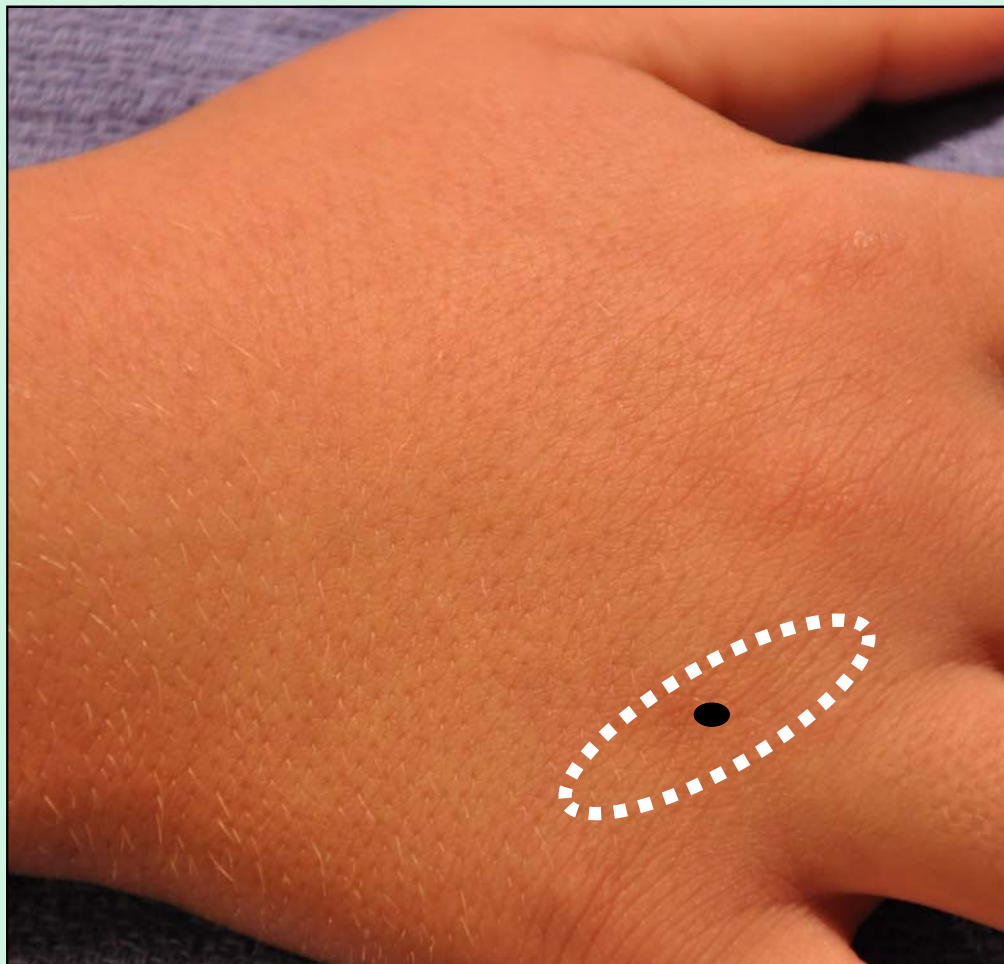
Difficult Venous Access

Case History

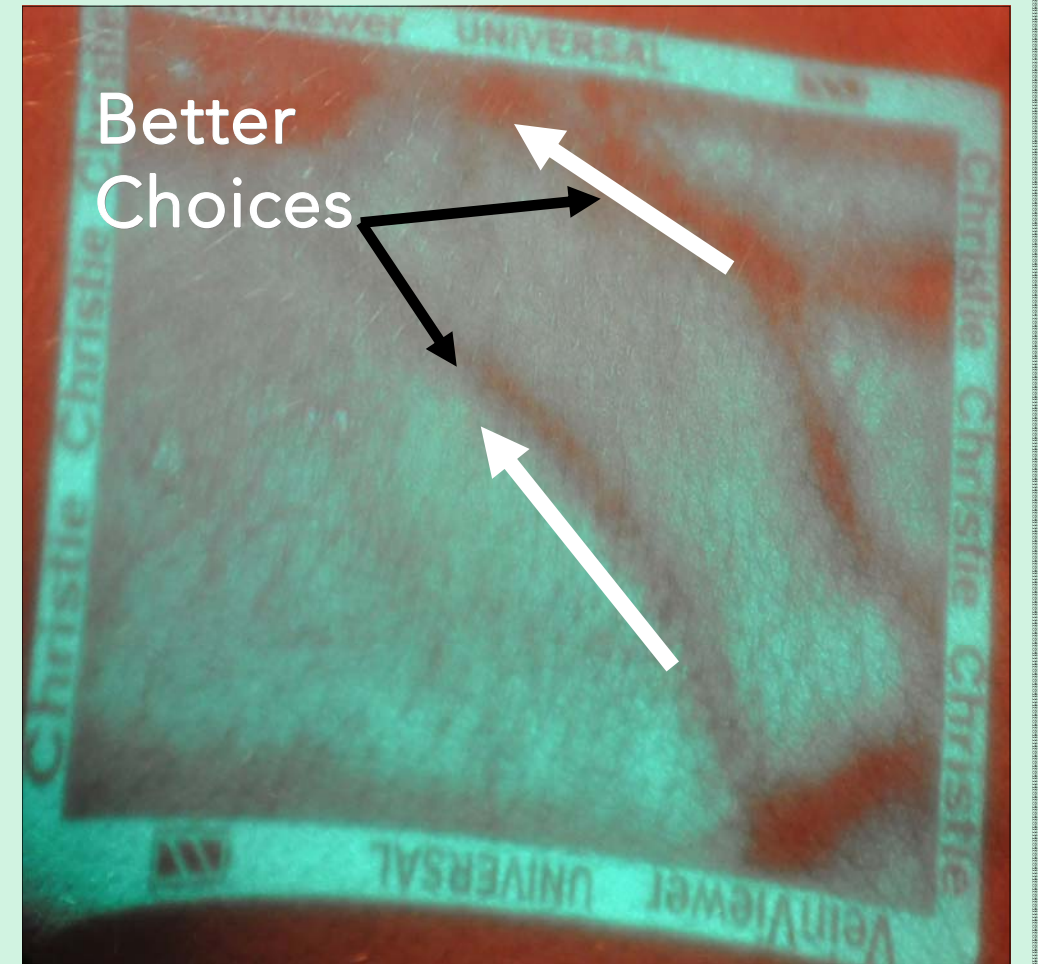
8 yr old with dehydration being admitted for IV therapy.

The only palpable/visible vein is on the R dorsal hand. IV placed does not advance or flow and the patient requires several additional sticks. Called to assess.

Assessment

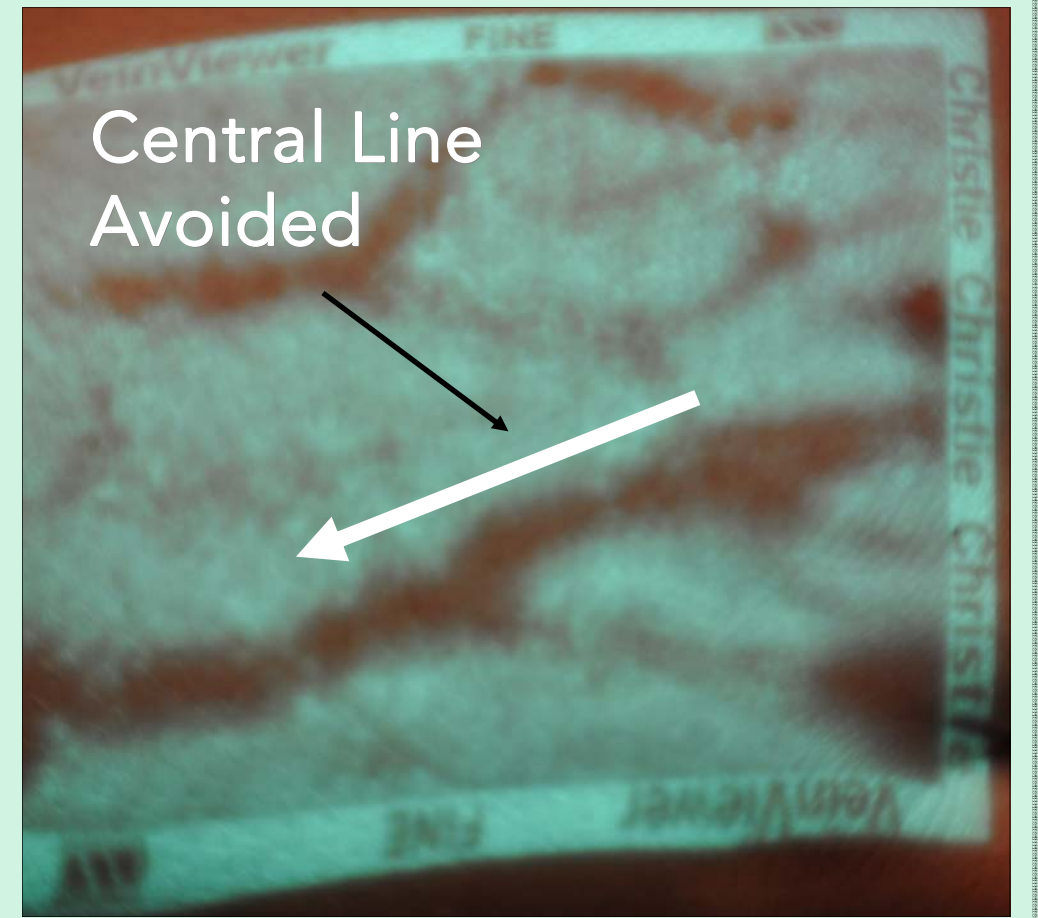


Vision



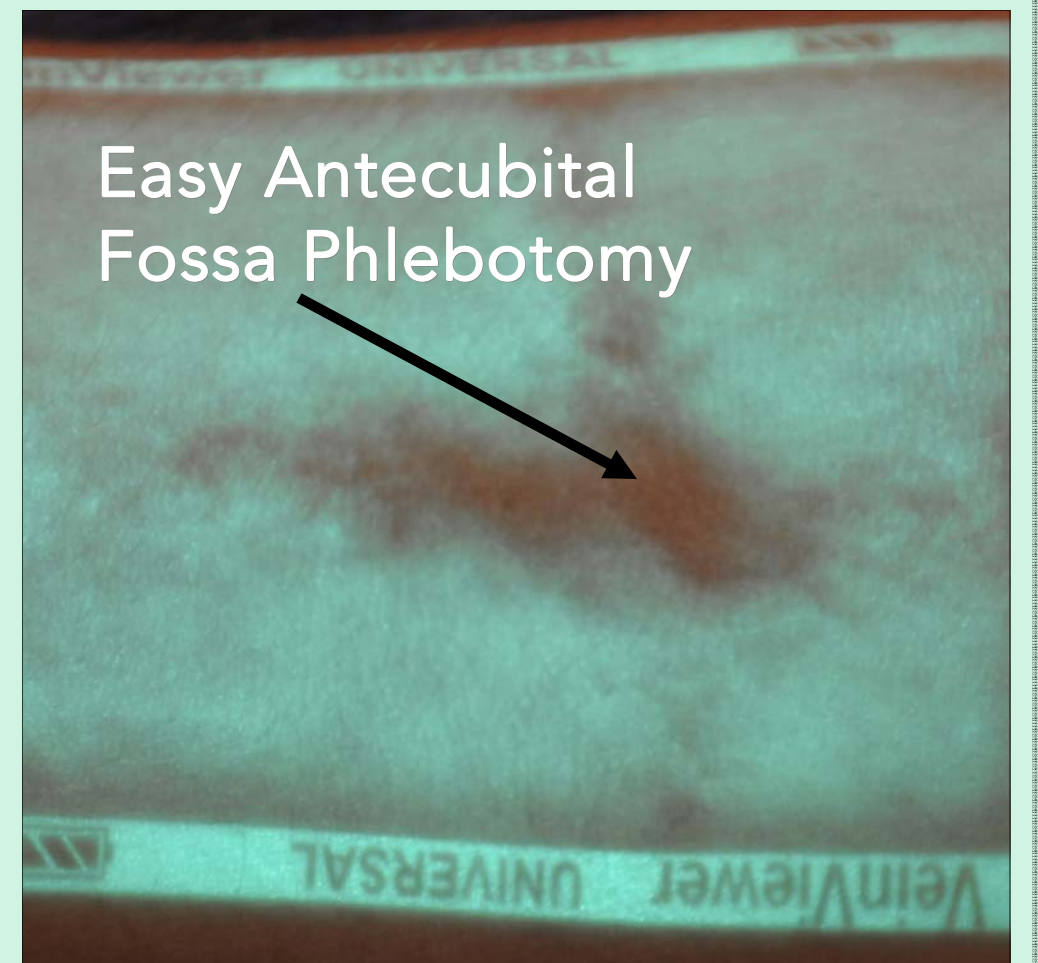
40 yr old obese female for 24 hour admission.

The anesthesiologist could not find peripheral access and is contemplating placement of a central line. The VeinViewer is used.



25 yr old with Type I Diabetes Mellitus requiring follow-up labs for compliance and end organ assessment.

Always requires multiple sticks to obtain blood.



VeinViewer VeinViewer VeinViewer UNIVERSAL VeinViewer VeinViewer VeinViewer

VeinViewer VeinViewer VeinViewer UNIVERSAL VeinViewer VeinViewer VeinViewer